

## Pricing:

Lathe, electronics, stand and all accessories: \$6175.00 + shipping.

## Shipping information:

The S750 is shipped assembled, with stand, on a 40" x 48" pallet, freight prepaid. The most economical method is for you to arrange to pick up the machine at the freight terminal with a pickup truck. That way the machine can be loaded as shipped. Once you get it to your shop, it can be disassembled on the truck, moved to your shop by two people and reassembled easily. We can also arrange for delivery to the ground at your location if necessary.

## Stubby Users Group:

There is an active Yahoo group of Stubby owners and those who may be interested in becoming owners. To join, go to <http://groups.yahoo.com/group/stubbygroup>. The group is closed to keep out spam but the moderators will be happy to approve your membership. Find out what Stubby owners think of their machines.

Stubby Lathe USA, Inc.

Wm. Rubenstein, President  
E-mail: [bill@stubbylatheusa.com](mailto:bill@stubbylatheusa.com)  
Phone: (314) 606-9366  
Web site: [www.stubbylatheusa.com](http://www.stubbylatheusa.com)

For a list of re-sellers, please see our web site.

Warehouse address:  
3483 New Town Blvd.  
Saint Charles MO 63301

Mailing address:  
3435 Hilltop Drive  
Saint Charles MO 63301



## The Omega Stubby S750 Lathe

Manufactured in Australia by:

**Omega Tool and Engineering  
Pty. Ltd.**

Imported and sold in North America  
exclusively by:

**Stubby Lathe USA, Inc.**  
and its authorized re-sellers

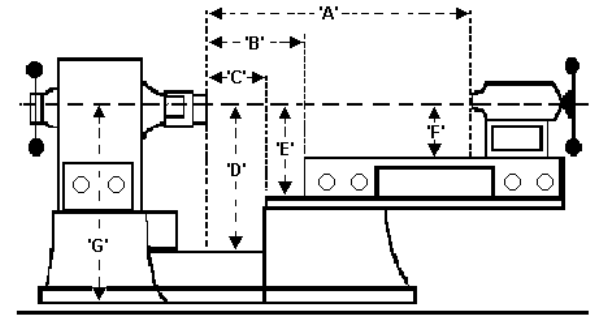
*If you are in the market for a lathe, you should try a Stubby before you make your buying decision. Contact us and we can most likely arrange it for you.*

Jan. 1, 2011

## Features

- A short-bed bowl and hollow-form lathe on which you can also turn spindles — not a spindle lathe on which you can turn bowls.
- Cast iron construction for freedom from vibration and long life — not fabricated steel construction.
- Height-adjustable stand.
- A 600+ lb. heavyweight lathe which is modular, can be assembled and disassembled quickly and can be moved by two people.
- Headstock to base alignment controlled by machined keyways — when it goes together, it is properly aligned.
- Patented sliding and rotating bed.
- Sliding the bed out allows you to:
  - Start very large blanks between centers for safety.
  - Turn platters, bowls or hollow-forms up to 30" in diameter.
  - Turn spindles up to 30" long.
- Rotating the bed allows you to:
  - Get it out of the way when working off the end of the lathe.
  - Move a trap to the back of the machine so that you can position your boring bar almost perpendicular to the axis of the lathe — really good for short but wide hollow forms.
- Unique auxiliary bed attaches to the machine in five different locations with several orientations. It allows unprecedented flexibility when it comes to mounting a banjo.
- 2 hp motor driven by an Eaton/Cutler Hammer Vector drive.
- Full function remote control (start, stop, direction and speed) mounted in a small aluminum box on a magnet — you can put it where you want it. Industrial quality, modular switches are easily replaceable in the event of a mishap.

## S750 Specifications



A	34"	This distance can be increased several inches by not fully engaging the locking plates under the bed and the tailstock.
B	14.5"	This distance can also be increased about one inch by not fully engaging the locking plate under the bed.
C	11.5"	
D	15"	30" swing over machine base.
E	13"	26" swing over turntable.
F	8"	16" swing over the bed.
G	20"	With the stand this gives a minimum spindle height of 44" and a maximum height of 53".
Base footprint	36" wide by 32" (+ or -) front to back. If you are short, the second measurement is a little smaller than that; if you are tall it will be a little greater. The motor adds about 9" to the left end. Extending the bed adds about 17" to the right end.	
Motor rating	2 hp, inverter duty	
Inverter type	Cutler-Hammer MVX9000 vector drive, rfi filter is standard, mounted on stand. By default, spindle rpm is displayed assuming low range pulley.	
Inverter output	0 — 130 Hz	
Motor speed	0 — 3705 rpm	
Spindle, low range	0 — 1390 rpm	
Spindle, high range	0 — 2770 rpm	
Spindle size	1 1/4" x 8 tpi, #2 Morse taper, drilled through to 3/8"+	
Tailstock	#2 Morse taper; drilled through to 3/8"+	
Indexing head	24 position	
Remote control	Full function: Start, Stop, Direction, Speed — supplied with magnet so that it can be positioned anywhere convenient.	
Accessories included	3 1/2" faceplate, #2 M/T live center, #2 M/T spur center, auxiliary bed, two banjos, 12" tool rest, 2 wrenches.	

\* You know the usual legal stuff — we believe the information to be accurate but mistakes happen.